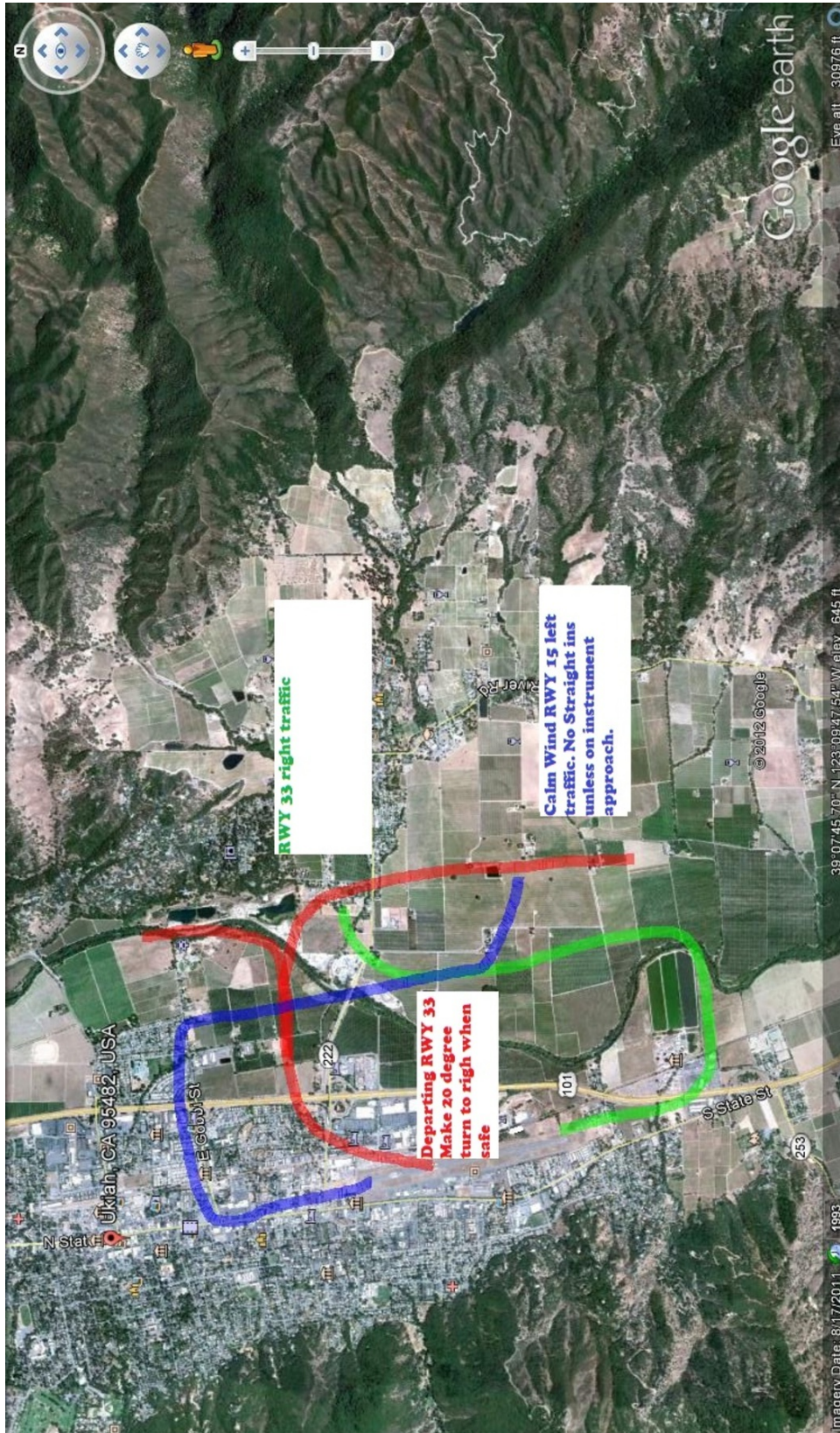


**KUKI****Ukiah Muni Airport**  
Ukiah, California, United StatesNoise  
Sensitivity  
Level:**MEDIUM****Diagram #1:**

All Aircraft Categories / All Runways



**KUKI****Ukiah Muni Airport**  
Ukiah, California, United StatesNoise  
Sensitivity  
Level:**MEDIUM**  
**ARRIVALS****All Aircraft Categories / All Runways**

When on final approach, fly at or above the VASI lights.

Avoid excessively low approaches.

**DEPARTURES****All Aircraft Categories / Runway 15**

Runway 15 – After takeoff make 15 degree turn to left when safe.

Calm wind runway 15

**All Aircraft Categories / Runway 33**

Runway 33 – After takeoff make 20 degree turn to right when safe.

Calm wind runway 15

**PREFERENTIAL RUNWAYS****All Aircraft Categories**

Calm wind runway 15

**AIRPORT CONTACT INFORMATION**

Name

**Ukiah Muni Airport****ABOUT AIRCRAFT CATEGORIES**

A	B	C	D	E	HELI
< 91 kts	91-120 kts	121-140 kts	141-165 kts	>165 kts	Helicopters

Aircraft Approach Categories are based on FAA reference speeds.  
See [http://whispertrack.com/pdf/faa\\_handbook.pdf](http://whispertrack.com/pdf/faa_handbook.pdf)

$$V_{REF} = 1.3 \times V_{SO}$$

OVERVIEW (NONE)

TEMPORARY INFORMATION (NONE)

MANDATORY RESTRICTIONS (NONE)

CURFEWS (NONE)

PREFERENTIAL INSTRUMENT PROCEDURES (NONE)

REVERSE THRUST (NO RESTRICTIONS)

PATTERN ALTITUDES (NONE SPECIFIED. REFER TO FAA A/FD.)

INTERSECTION TAKEOFFS (NO RESTRICTIONS)

APU USE (NO RESTRICTIONS)

ENGINE RUNUP (NO RESTRICTIONS)

FLIGHT TRAINING (NO RESTRICTIONS)

COMMUNITY GROUPS/INFO (NONE)

STAGE II (NO RESTRICTIONS)

STAGE III (NO RESTRICTIONS)

FLIGHT TRACK MONITORING (NONE)

NOISE ORDINANCE (NONE)

NOISE MONITORING (NONE)

PRIOR PERMISSION (PPR) OPERATIONS (NONE)

NBAA PROCEDURES (NOT APPLICABLE)

AOPA NOISE AWARENESS STEPS (NOT APPLICABLE)