

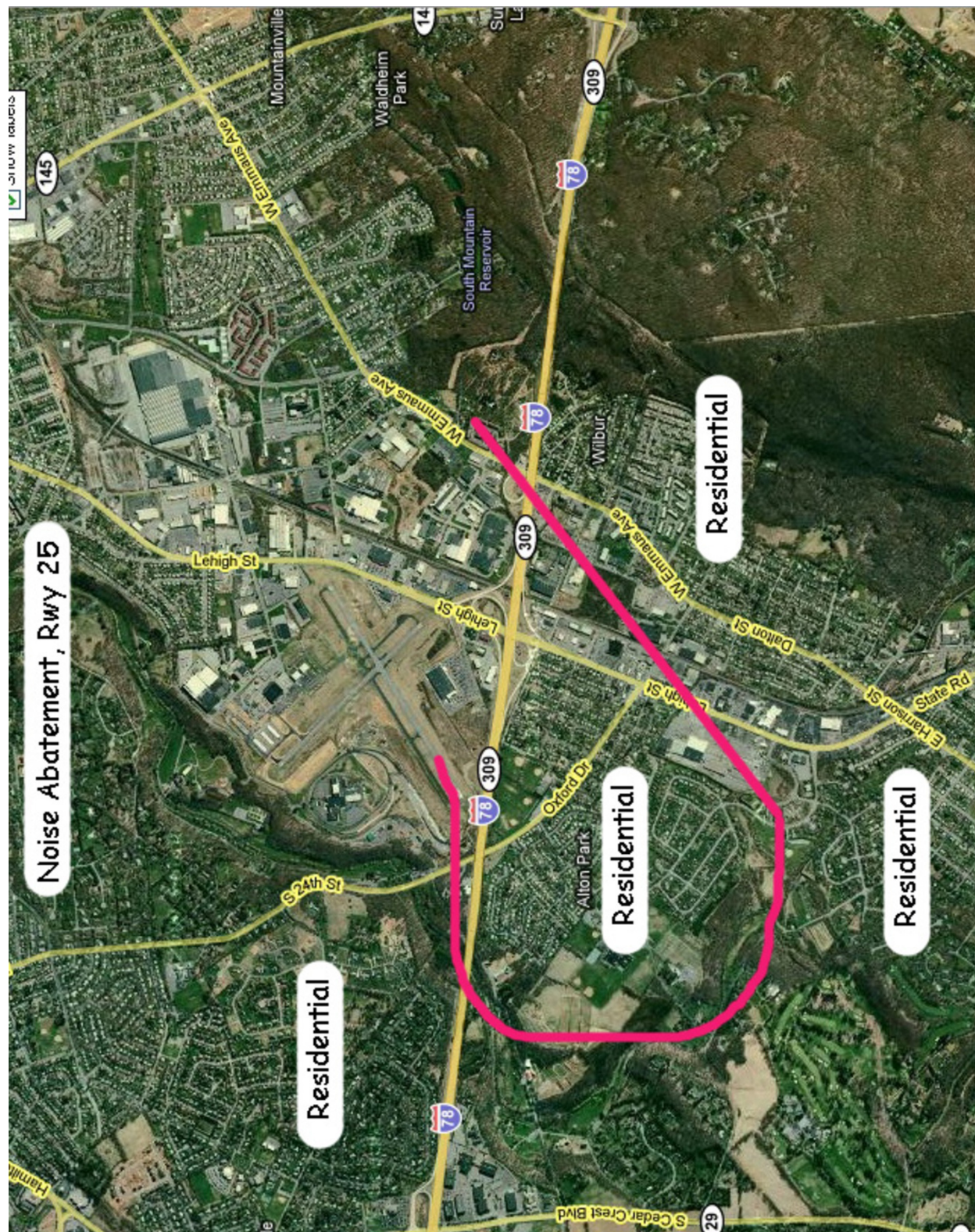


Allentown Queen City Muni Airport
Allentown, Pennsylvania, United States

Noise Sensitivity Level: **MEDIUM**

Diagram #1: Runway 25 Noise Abatement Departure Corridor

All Aircraft Categories / Runway 25



	Allentown Queen City Muni Airport Allentown, Pennsylvania, United States	Noise Sensitivity Level: MEDIUM 
--	--	---

DEPARTURES

All Aircraft Categories / Runway 25
 Noise abatement procedures in effect, for details call airport management at 610-791-5193. Turn to heading 290 degrees off runway end when departing Runway 25 (then see map for residential areas to avoid).

PREFERENTIAL RUNWAYS

All Aircraft Categories
 When wind is calm, use Runway 25

AIRPORT CONTACT INFORMATION

<p>Name Kimberly Eisenhart Phone 610-791-5193 Web Address http://www.lvasfbo.org/Queen/index.html</p>	<p>Allentown Queen City Muni Airport 1730 Vultee Street Allentown PA 18109</p>
--	---

ABOUT AIRCRAFT CATEGORIES

A	B	C	D	E	HELI
< 91 kts	91-120 kts	121-140 kts	141-165 kts	>165 kts	Helicopters

Aircraft Approach Categories are based on FAA reference speeds.
 See http://whispertrack.com/pdf/faa_handbook.pdf
 $V_{REF} = 1.3 \times V_{SO}$

- OVERVIEW (NONE)
- TEMPORARY INFORMATION (NONE)
- MANDATORY RESTRICTIONS (NONE)
- CURFEWS (NONE)
- ARRIVALS (NOT SPECIFIED)
- PREFERENTIAL INSTRUMENT PROCEDURES (NONE)
- REVERSE THRUST (NO RESTRICTIONS)
- PATTERN ALTITUDES (NONE SPECIFIED. REFER TO FAA A/FD.)
- INTERSECTION TAKEOFFS (NO RESTRICTIONS)
- APU USE (NO RESTRICTIONS)
- ENGINE RUNUP (NO RESTRICTIONS)
- FLIGHT TRAINING (NO RESTRICTIONS)
- COMMUNITY GROUPS/INFO (NONE)
- STAGE II (NO RESTRICTIONS)
- STAGE III (NO RESTRICTIONS)
- FLIGHT TRACK MONITORING (NONE)
- NOISE ORDINANCE (NONE)
- NOISE MONITORING (NONE)
- PRIOR PERMISSION (PPR) OPERATIONS (NONE)
- NBAA PROCEDURES (NOT APPLICABLE)
- AOPA NOISE AWARENESS STEPS (NOT APPLICABLE)